

(DE) (BE)

Alu-Insektenschutz für Türen MASTER SLIM PLUS

(FR) (BE)

Moustiquaire en aluminium pour portes
MASTER SLIM PLUS

(NL) (BE)

Insectenhor van aluminium voor deuren
MASTER SLIM PLUS

(ES)

Mosquitera de aluminio para puertas
MASTER SLIM PLUS

(CZ)

Hliníkové sítě proti hmyzu na dveře
MASTER SLIM PLUS

(PL)

Aluminiowa moskitiera do drzwi
MASTER SLIM PLUS

(SL)

Aluminijasta mreža proti mrčesu za vrata mrčesu
MASTER SLIM PLUS

(HU)

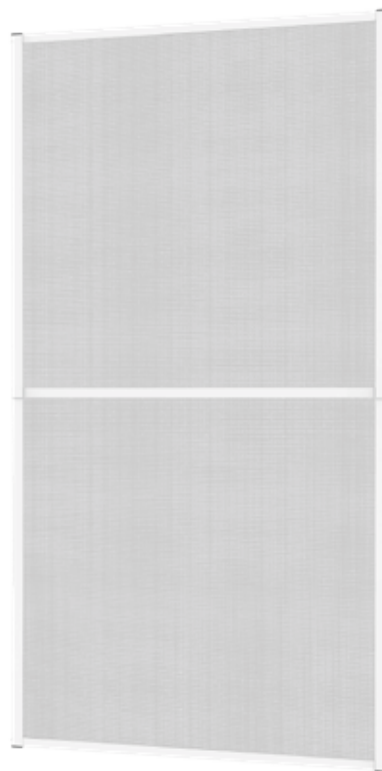
Alumínium rovarháló ajtókhöz
MASTER SLIM PLUS

(IT)

Zanzariera in alluminio per porte
MASTER SLIM PLUS

(PT)

Tela de proteção contra insectos em alumínio
para portas
MASTER SLIM PLUS



Montageanleitung

Montagehandleiding

Instructions de montage

Instrucciones de montaje

Návod k montáži

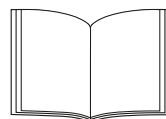
Instrukcje montażu

Navodila za sestavljanje

Összeszerelési útmutató

Istruzioni di montaggio

Instruções de montagem





Bitte vor Montage sorgfältig alle Punkte lesen! Anleitung aufbewahren und bei Weitergabe des Produktes mit aushändigen!

Bestimmungsgemäßer Gebrauch

Das Insektenschutzprodukt darf nur für den bestimmungsgemäßen nicht gewerblichen Gebrauch (Montage zum Schutz vor Eindringen von Insekten im privaten Bereich) verwendet werden. Bei missbräuchlicher Nutzung kann es zu erheblichen Gefährdungen kommen. Zusätzliche Belastungen dieses Produktes durch angehängte Gegenstände oder Bedienung über die mechanischen Begrenzungen hinaus können zur Beschädigung des Produktes führen und sind daher nicht zulässig. Für hieraus resultierende Schäden haftet der Hersteller nicht.

Sicherheitshinweise

Folienbeutel und Kleinteile von Kindern fernhalten!
ERSTICKUNGSGEFAHR!

Haftung

Bei Nichtbeachtung der in dieser Anleitung angegebenen Hinweise und Informationen, bei nicht bestimmungsgemäßem Gebrauch oder bei Einsatz außerhalb des vorgesehenen Verwendungszweckes, lehnt der Hersteller die Gewährleistung für Schäden am Produkt ab. Die Haftung für Folgeschäden an Elementen aller Art oder Personen ist ausgeschlossen.

Reinigung

Verwenden Sie zur Reinigung nur ein feuchtes Tuch mit mildem Reinigungsmittel. Das Gewebe können Sie mit einem Staubsauger (mit Bürstenaufsatz) oder Handbesen von Staub befreien.

Entsorgung

Denken Sie an den Umweltschutz. Zur Entsorgung von Verpackungsmaterialien und Altgeräten gibt es ein öffentliches Rücknahmesystem. Auskünfte über Sammelstellen und aktuelle Bestimmungen erhalten Sie bei Ihrer Stadt- oder Gemeindeverwaltung.



- Verwenden Sie benötigtes Werkzeug umsichtig um Verletzungen zu vermeiden. Tragen Sie Schutzausrüstung (z. B. Schutzbrille).
- Stellen Sie vor der Verwendung sicher, dass alle Teile unbeschädigt und vorhanden sind. Beginnen Sie keine Montage bei Fehlteilen oder beschädigten Teilen.

Gewährleistung

Es gilt die gesetzliche Gewährleistungspflicht.
Von der Gewährleistung ausgenommen:

- Unsachgemäße Benutzung
- Unsachgemäße Montage
- Schäden durch zu aggressive Reinigung
- Schäden durch nicht originale Ersatzteile
- Schäden durch Verletzung der Sorgfaltspflicht
- Verschleißteile
- Nicht vorgesehene Verwendung

Service

hecht international GmbH | Im Herrmannshof 10 | 91595 Burgoberbach | GERMANY | +49 (0)9805-93331981
www.hecht-international.com/service

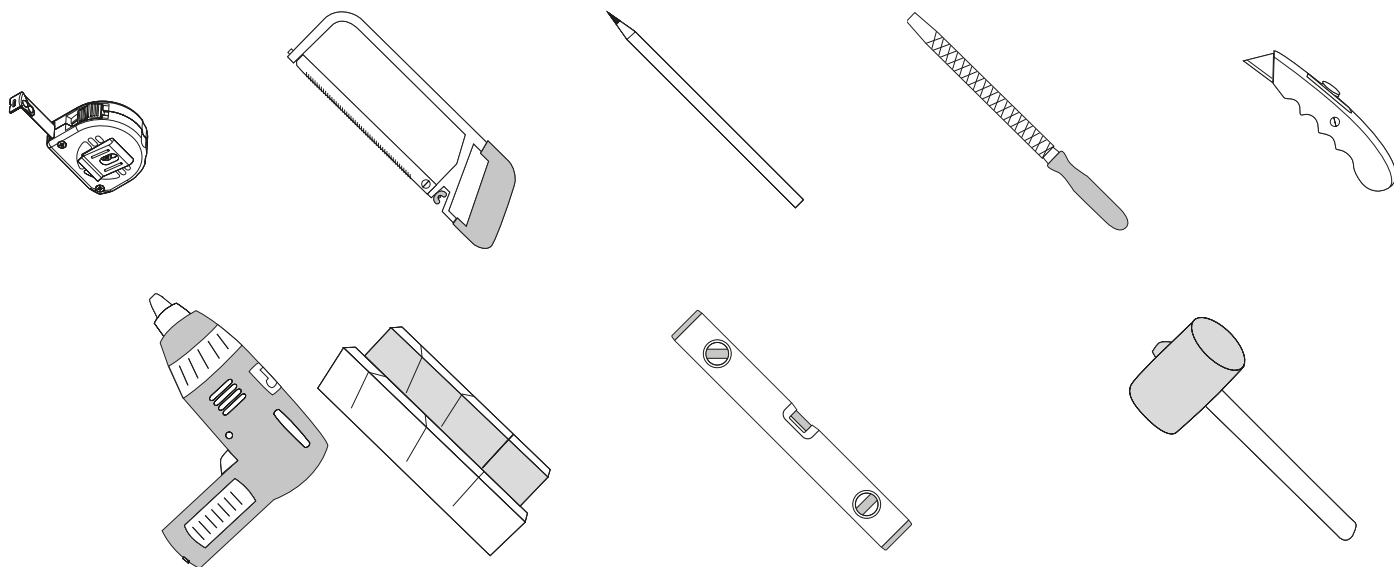
Symbolerklärung

Nachfolgend gelistete Warnsymbole werden in dieser Montageanleitung verwendet.

	Klemmgefahr! Bei der Montage oder Justagearbeiten besteht die Gefahr von Klemm-/Quetschverletzungen!
	Schnittgefahr! Bei der Montage besteht die Gefahr von Schnittverletzungen!
	Hinweis / Aufmerksamkeit Bei der Montage ist besondere Aufmerksamkeit gefordert, Ansichten zu beachten oder eine Handlung auszuführen!
	Achtung! Mögliche Sachbeschädigungen oder anderweitige durch Unachtsamkeit entstehende Verletzungen/Gefahren!
	Wichtige Information! Wichtige Information für Montage und Funktion!
	Absturzgefahr! Nicht gegen das Produkt lehnen. Auf eigene Sicherheit achten.
	Warnung! Gefährdung durch magnetische Felder. Personen mit Herzschrittmacher dürfen sich keinen magnetischen Feldern aussetzen. Setzen Sie keine Datenträger (z. B. Kreditkarten) oder elektronische Geräte (z. B. Handy) den magnetischen Feldern aus.

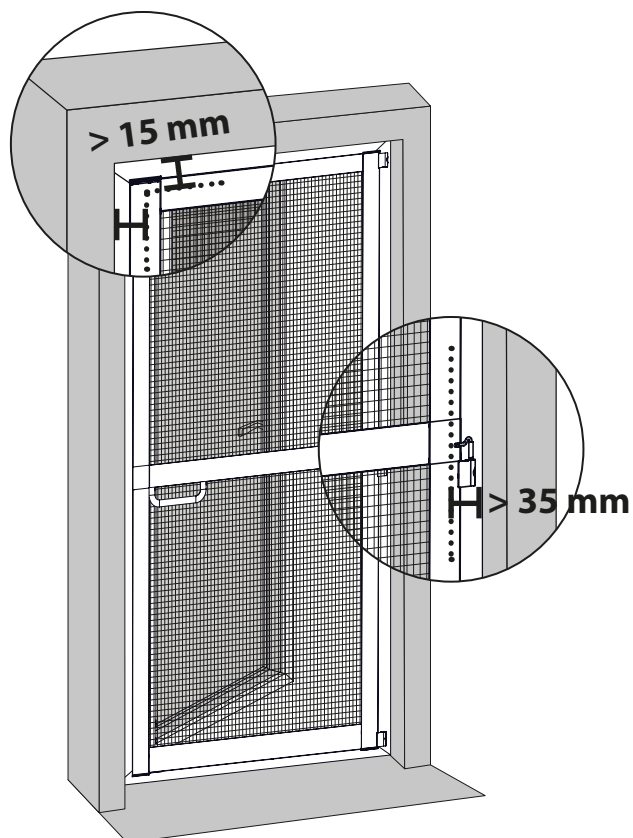
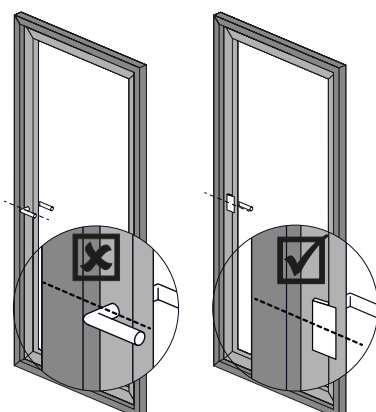
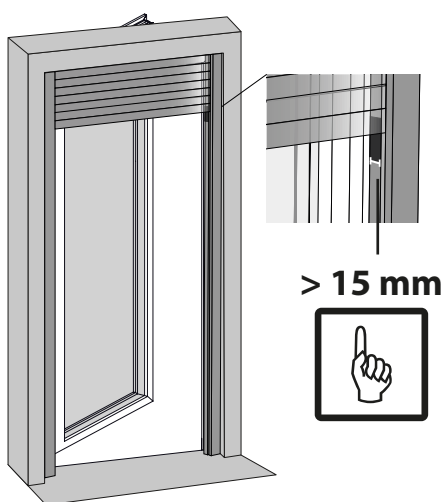
Werkzeug

Gereedschap - Outils - Herramienta - Nástroj - Narzędzie - Orodje - Szerszám - Strumento - Ferramenta - Værktøj



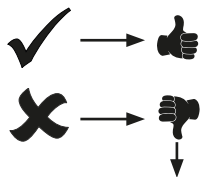
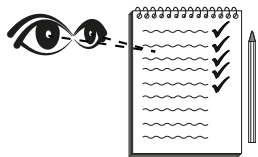
Montagehinweis

Montage-instructies - Instructions de montage - Instrucciones de montaje - Pokyny k montáži - Instrukcje montażu - Navodila za montažo - Szerelési útmutató - Istruzioni per il montaggio - Instruções de montagem - Instruktioner til montering

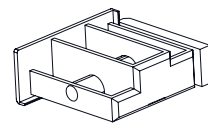


Lieferumfang

Leveringsomvang - Contenu de l'emballage - Volumen de suministro - Rozsah dodávky - Zakres dostawy - Obseg dobave - A szállítás terjedelme - Ambito di consegna - Âmbito da entrega - Leveringsomfang

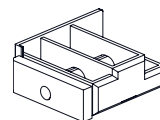


www.hecht-international.com/service



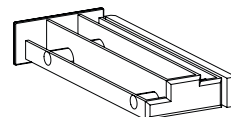
1x

F 00787-0013



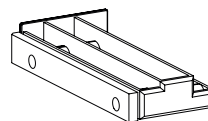
1x

G 00787-0014



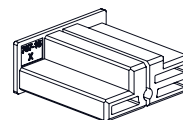
1x

H 00787-0006



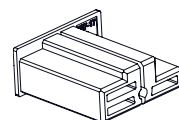
1x

I 00787-0011



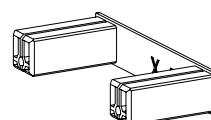
1x

J 00787-0015



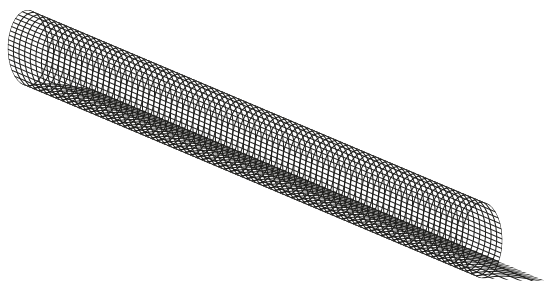
1x

K 00787-0017



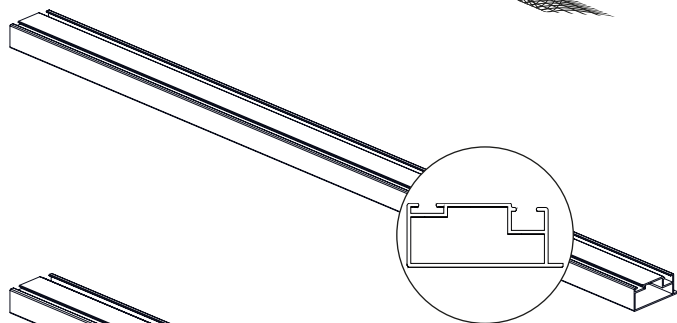
2x

L 00787-0005



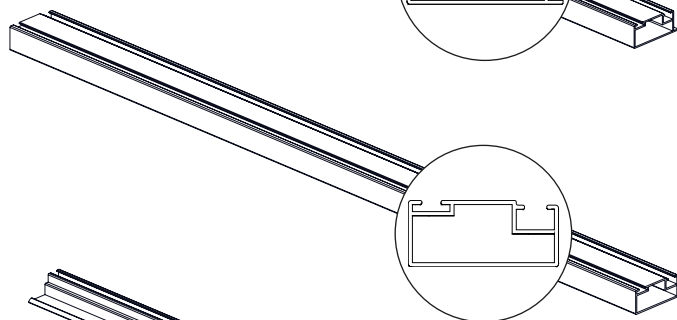
1x

A S-0097



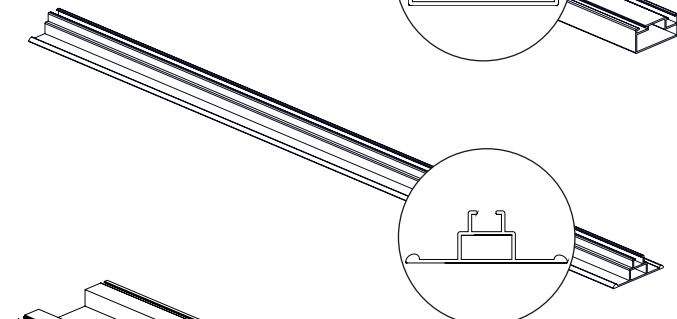
4x

B 00787-0004



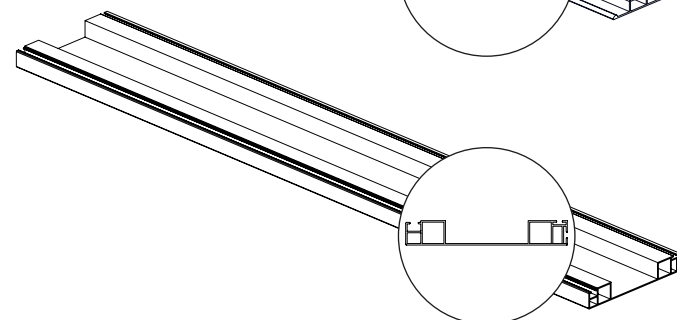
1x

C 00787-0001



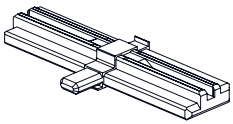
1x

D 00787-0003



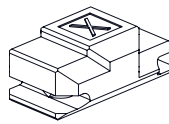
1x

E 00787-0002



2x

M 00787-0007



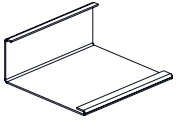
1x

T 00787-0019



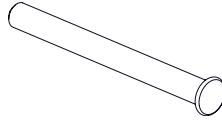
2x

A1 00014-0044



1x

N 00787-0016



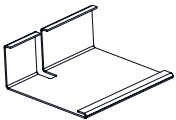
3x

U 00787-0021



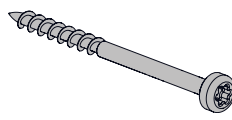
3x

B1 S-0017 3x short



1x

O 00787-0012



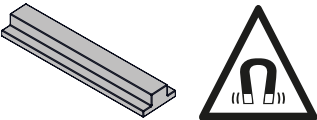
6x

V 00787-0032



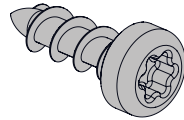
4x

B1 S-0017 4x long



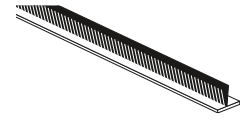
2x

P 00787-0020



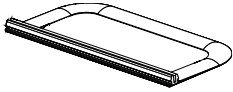
4x

W 00787-0031



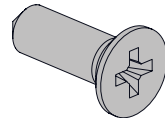
1x

C1 S-0095



1x

Q 00787-0009



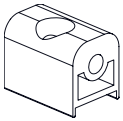
2x

X N-0177



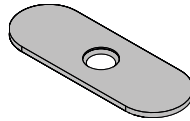
1x

D1 00245-0041



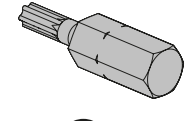
3x

R 00787-0010



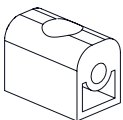
2x

Y 00014-0027



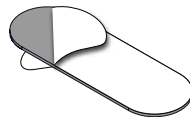
1x

E1 W-0015



3x

S 00787-0008



2x

Z 00014-0045



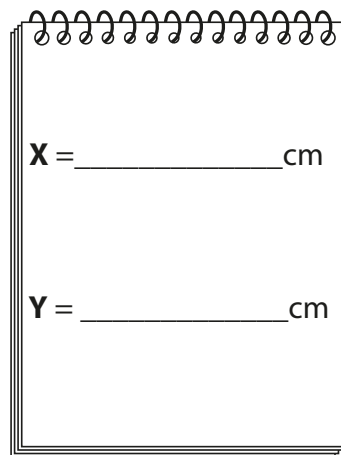
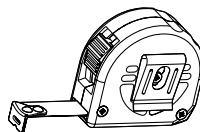
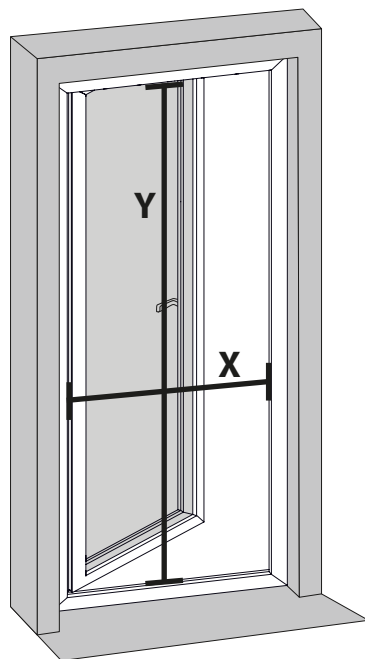
1x

F1 W-0001

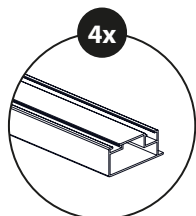
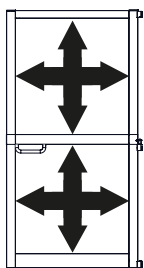
Montage

Montage - Montage - Montaje - Montáž - Montaż - Montaža - Összeszerelés - Montaggio - Montagem - Montering

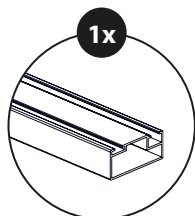
1



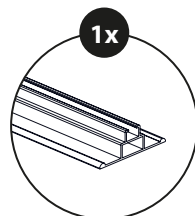
2



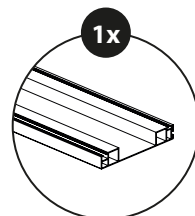
B 00787-0004



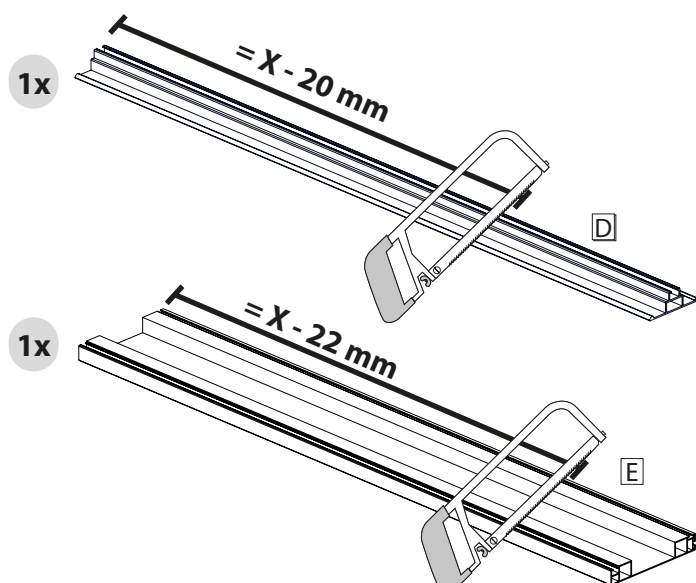
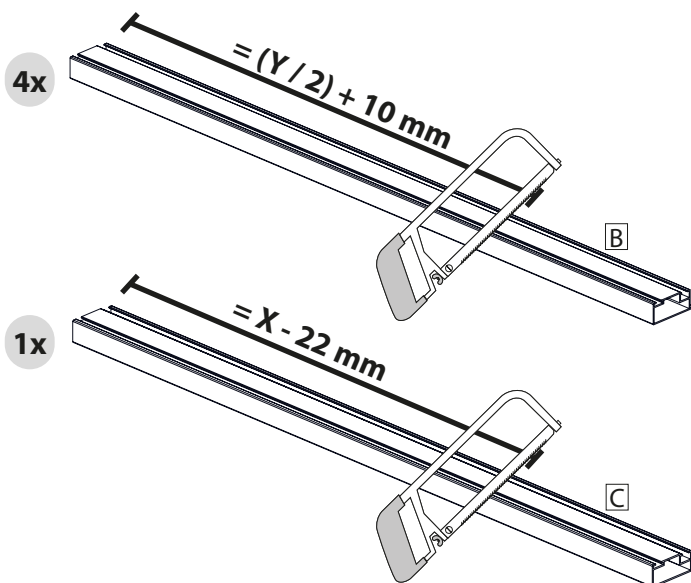
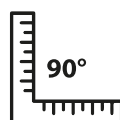
C 00787-0001



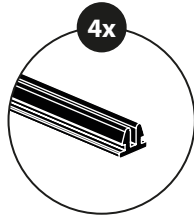
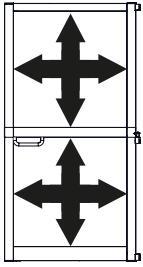
D 00787-0003



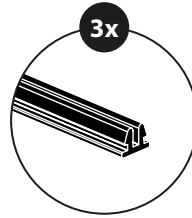
E 00787-0002



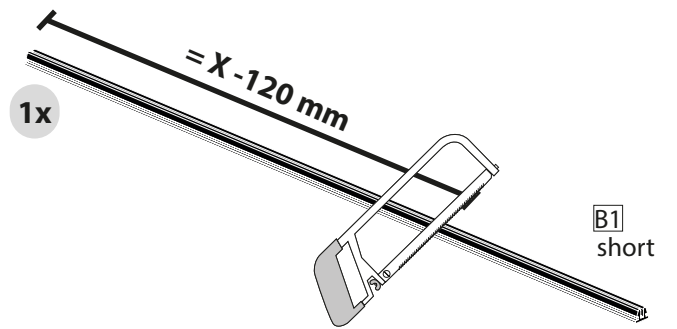
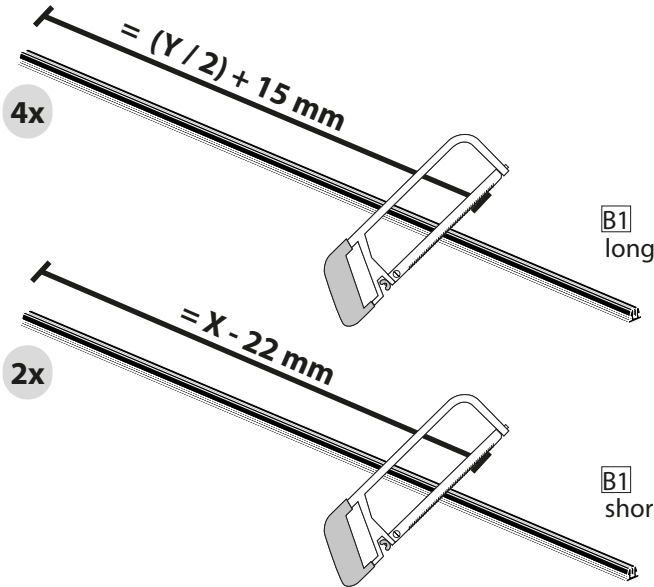
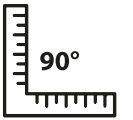
3



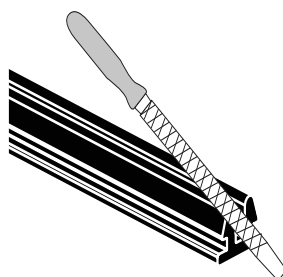
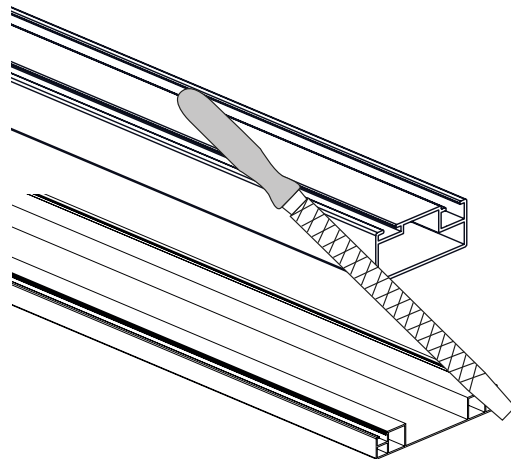
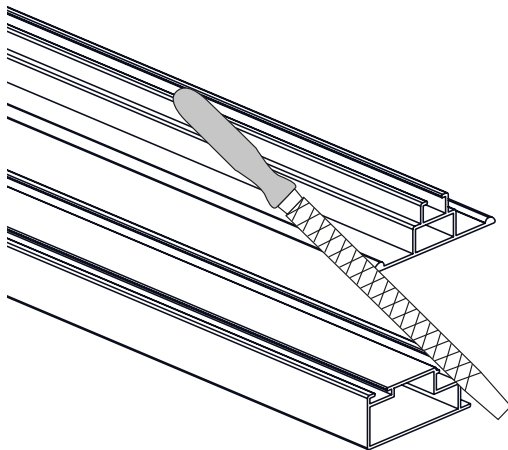
B1 S-0017 long



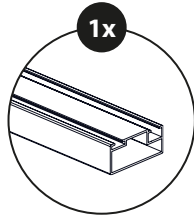
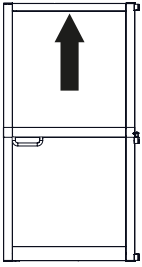
B1 S-0017 short



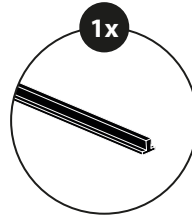
4



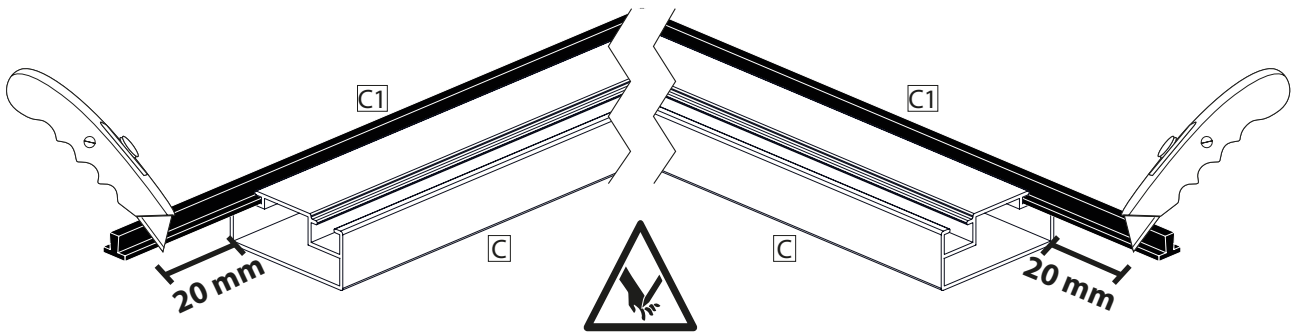
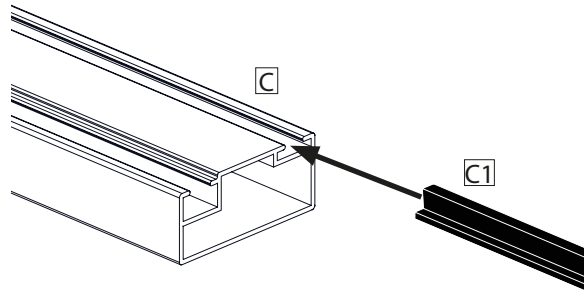
5



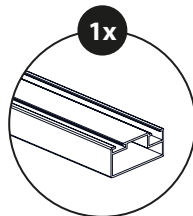
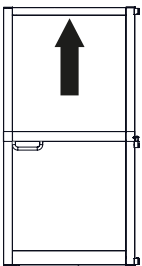
C 00787-0001



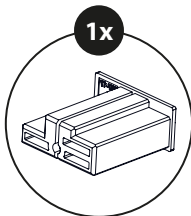
C1 S-0095



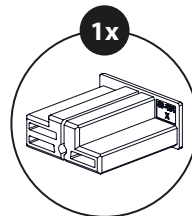
6



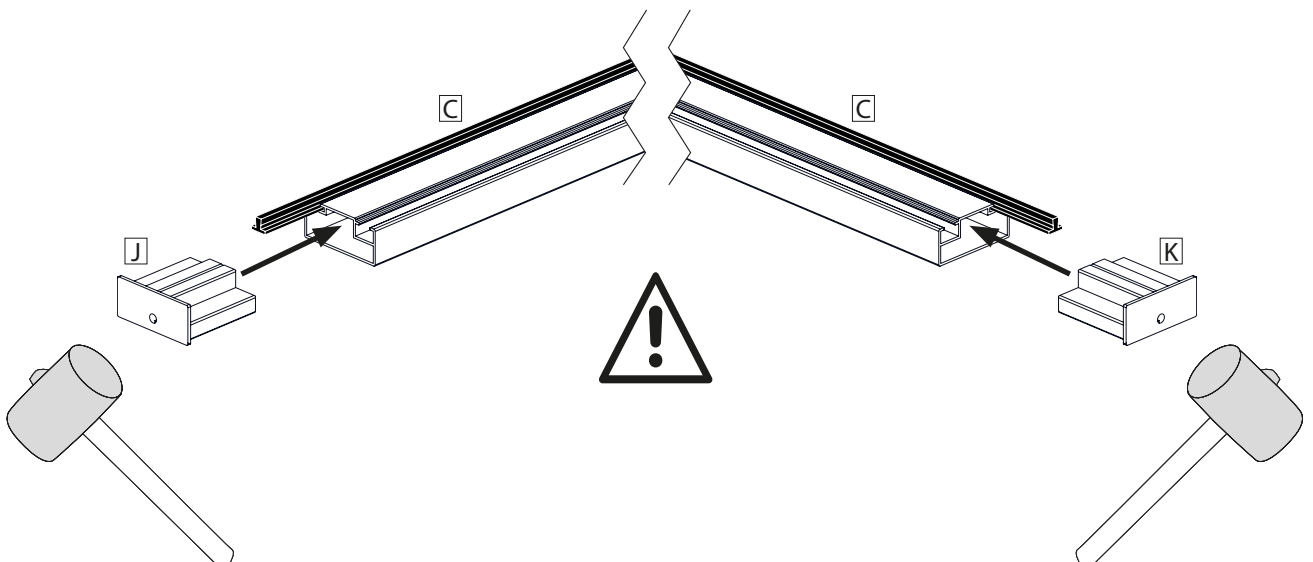
C 00787-0001



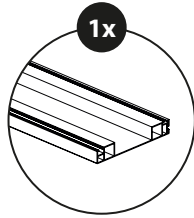
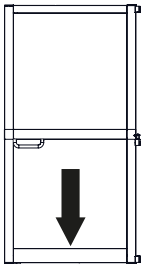
J 00787-0015



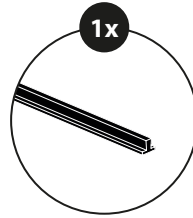
K 00787-0017



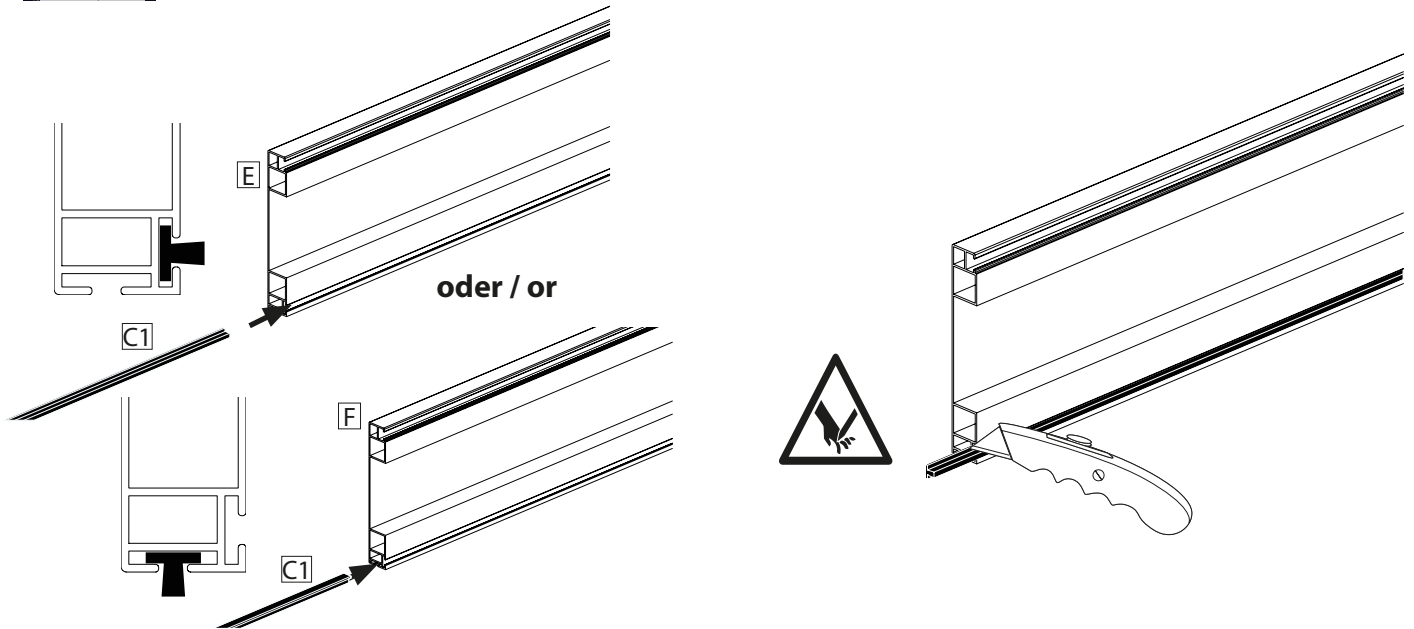
7



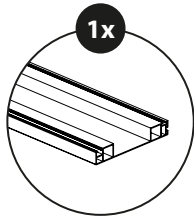
E 00787-0002



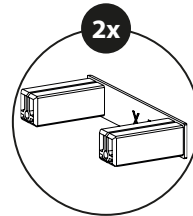
C1 S-0095



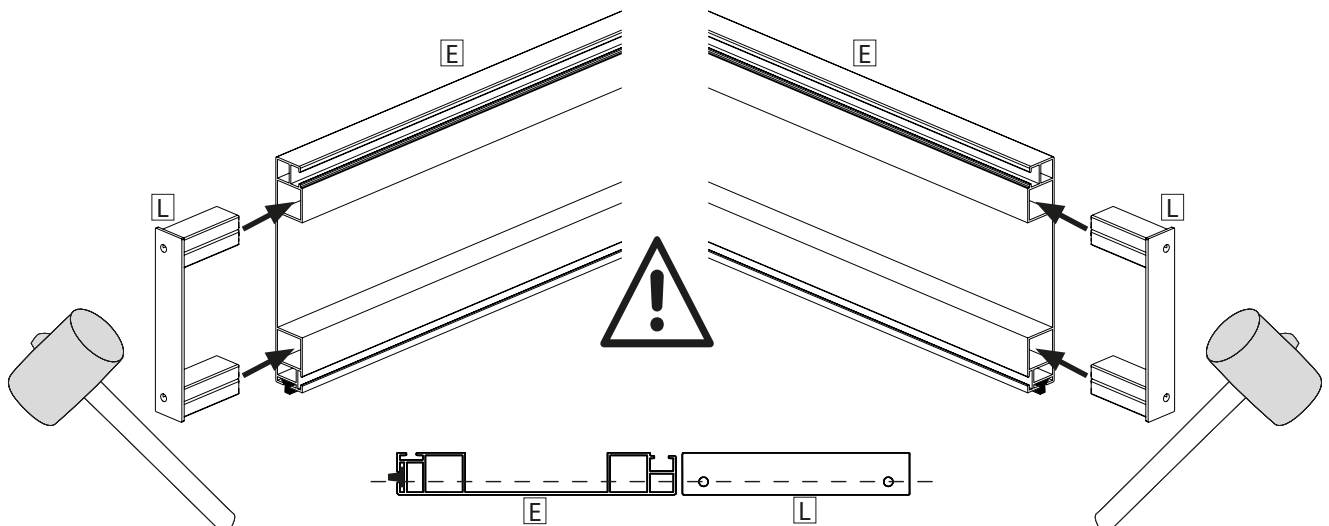
8



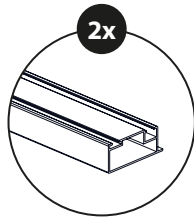
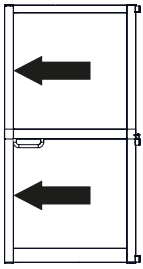
E 00787-0002



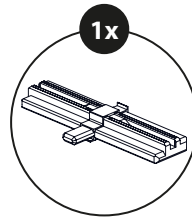
L 00787-0005



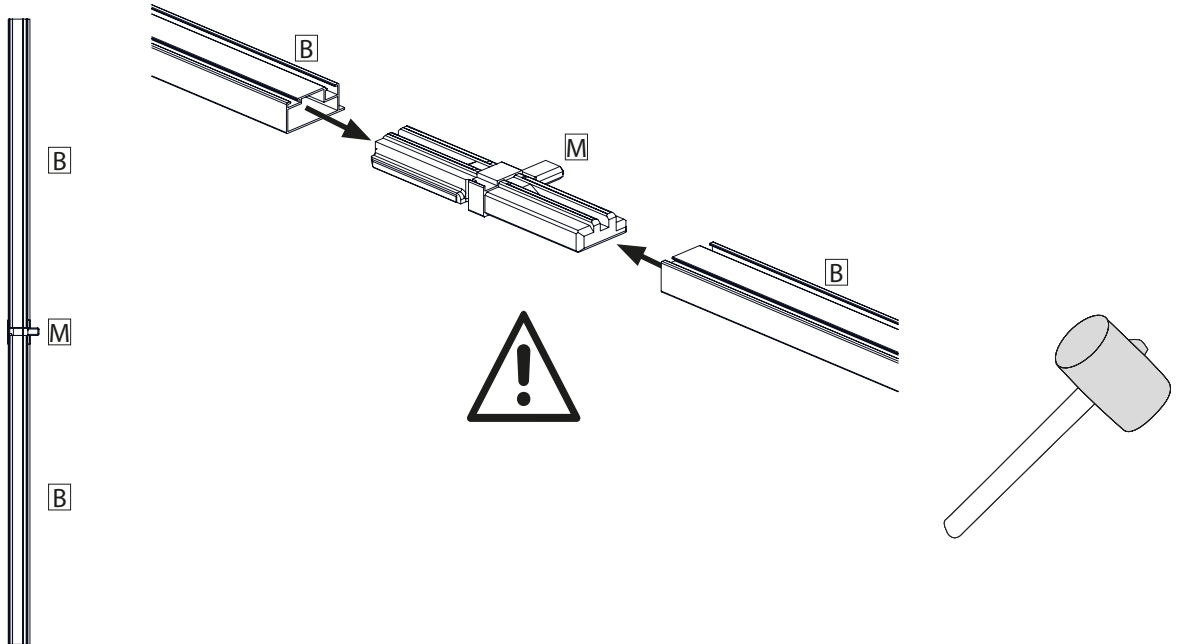
9



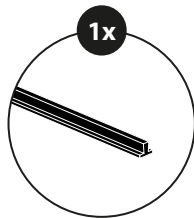
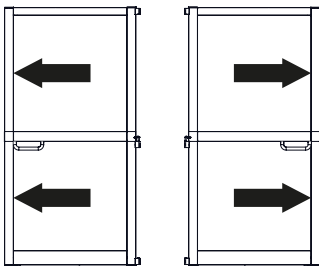
B 00787-0004



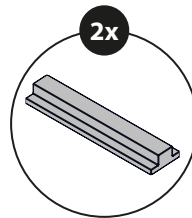
M 00787-0007



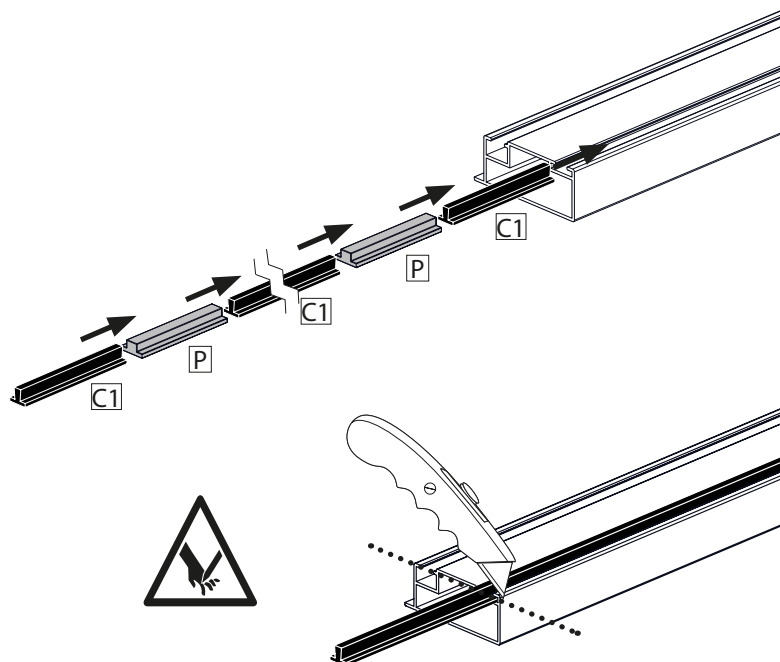
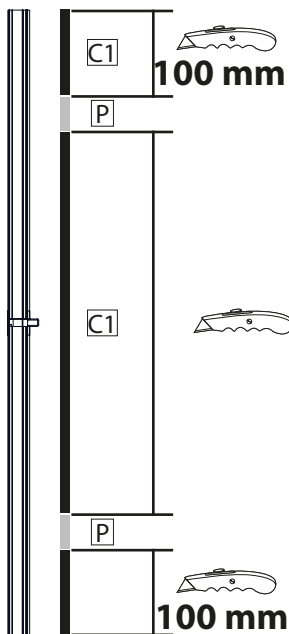
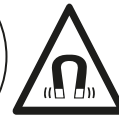
10

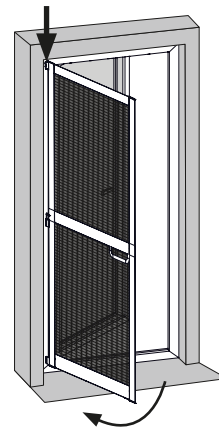
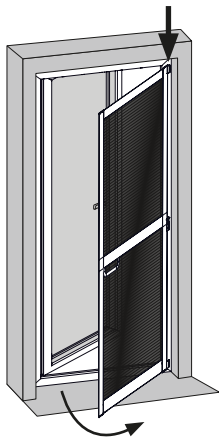


C1 S-0095



P 00787-0020

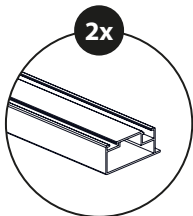
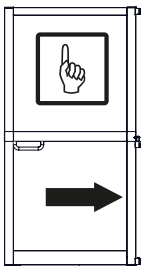




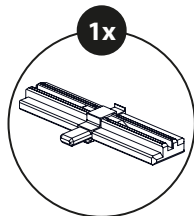
→ **12** + **14**

→ **13**

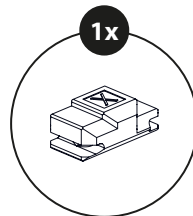
12



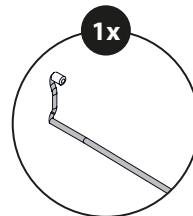
B 00787-0004



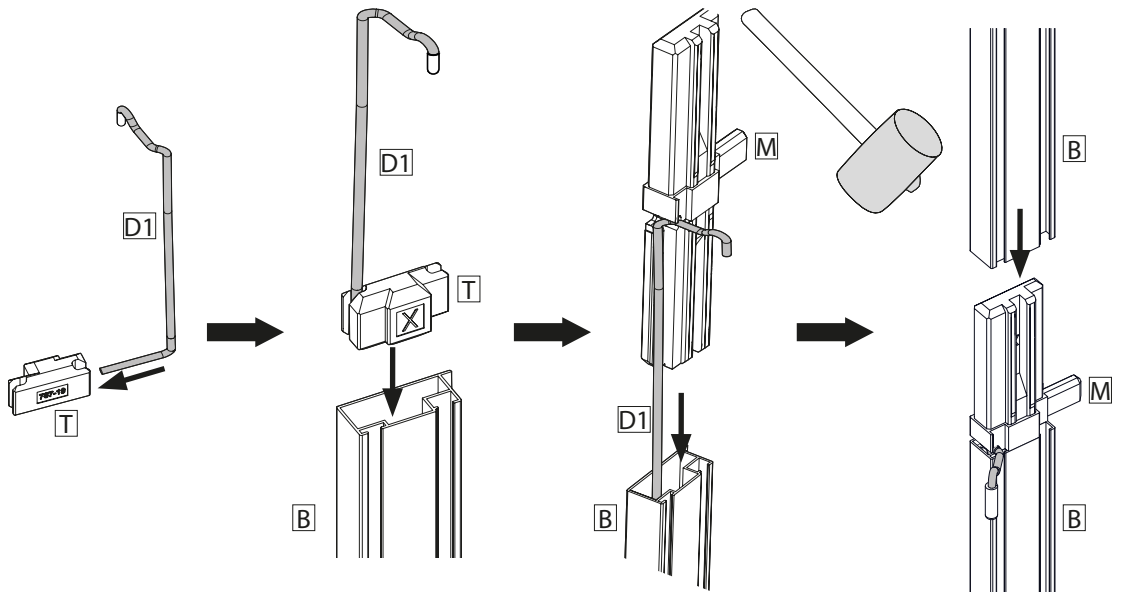
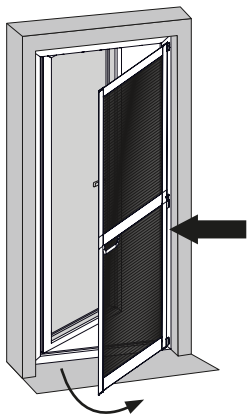
M 00787-0007



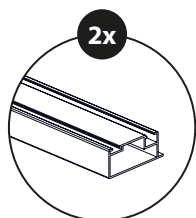
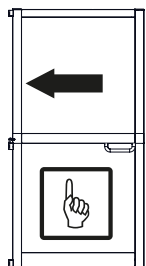
T 00787-0019



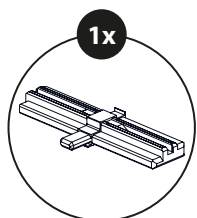
D1 00245-0041



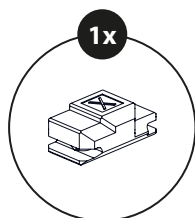
13



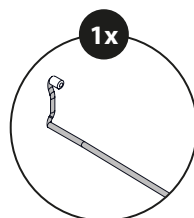
B 00787-0004



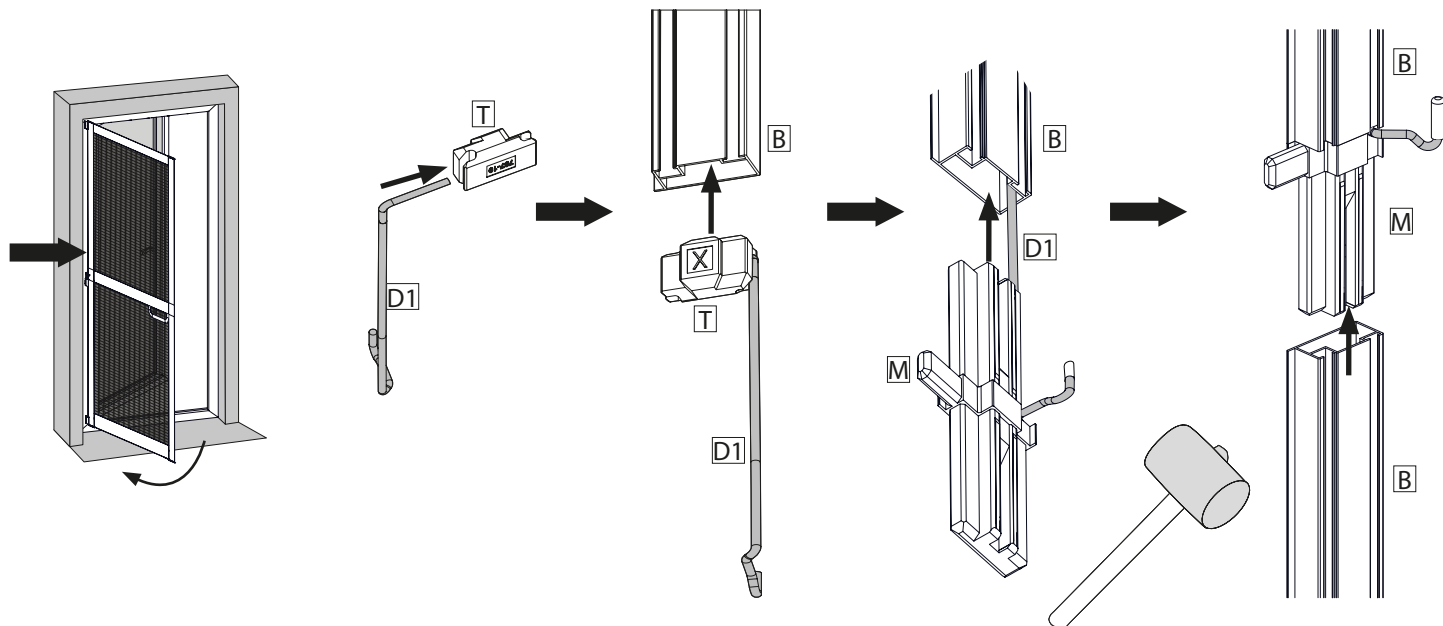
M 00787-0007



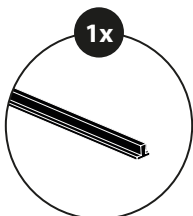
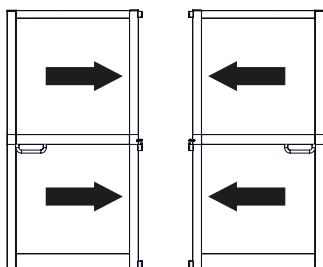
T 00787-0019



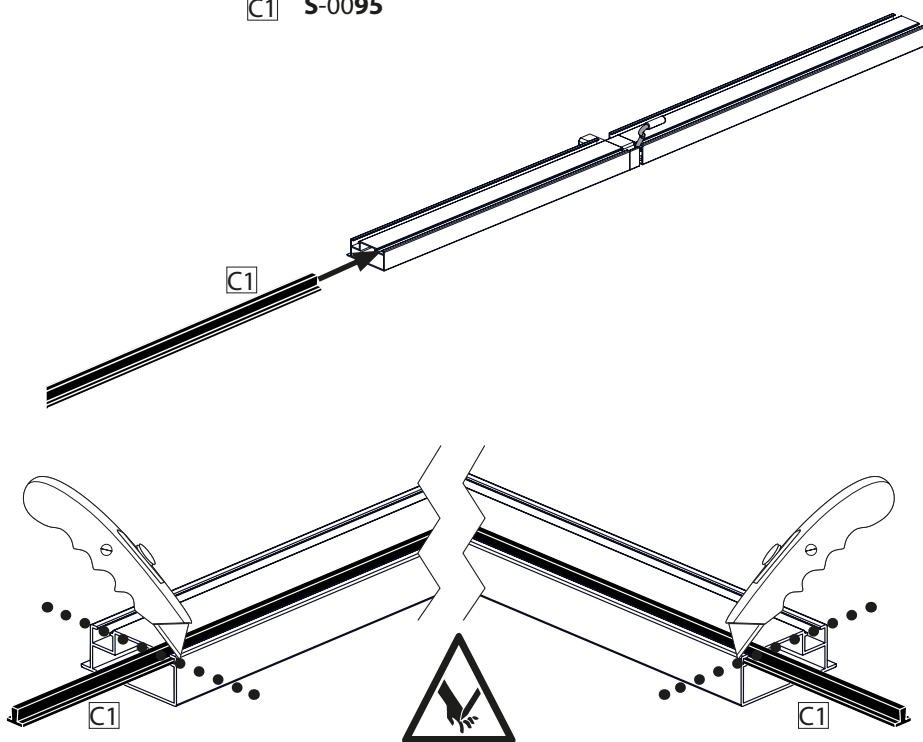
D1 00245-0041



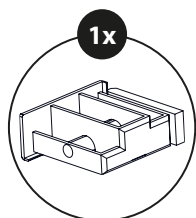
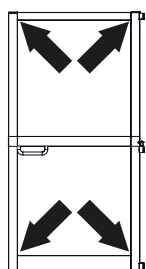
14



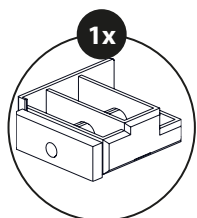
C1 S-0095



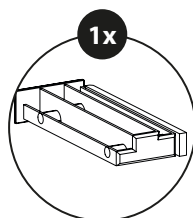
15



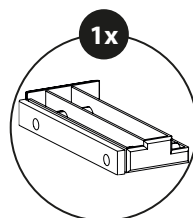
F 00787-0013



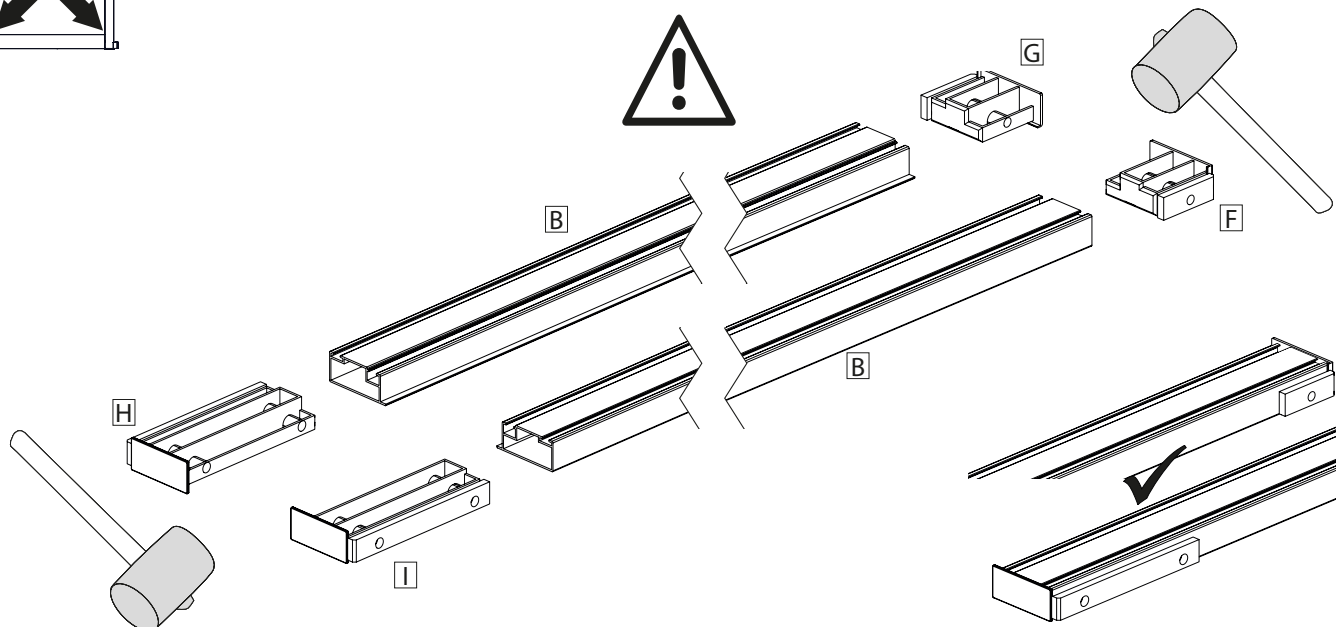
G 00787-0014



H 00787-0006

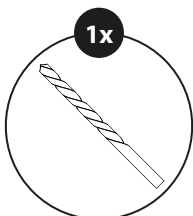
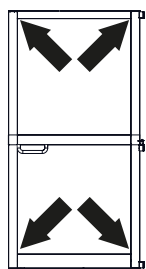


I 00787-0011

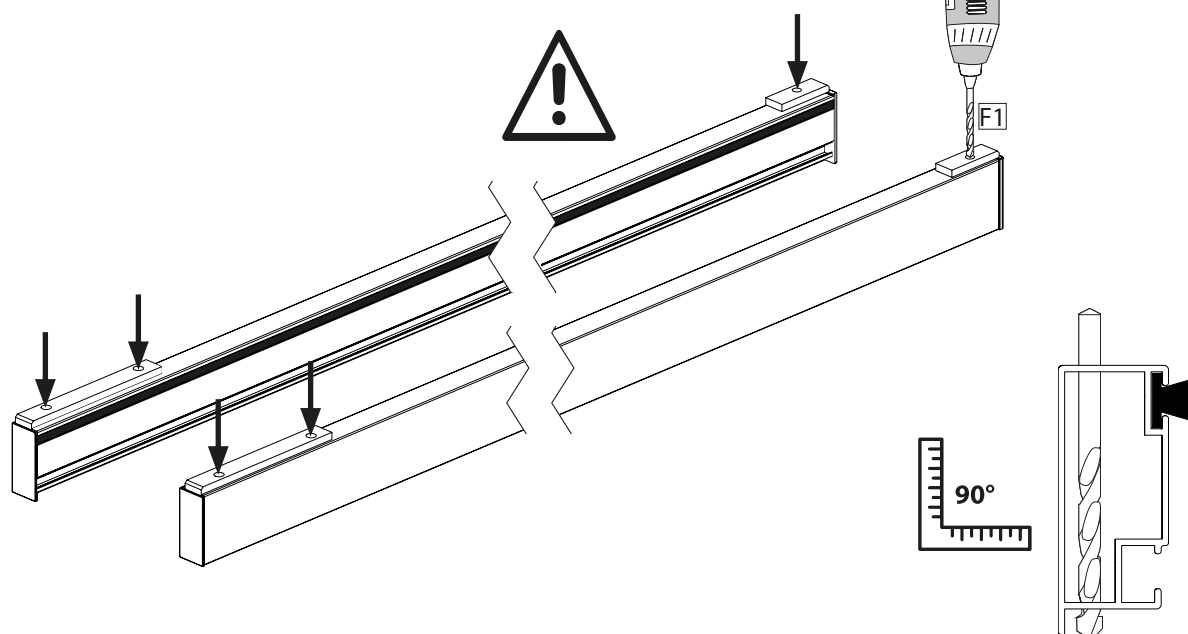


16

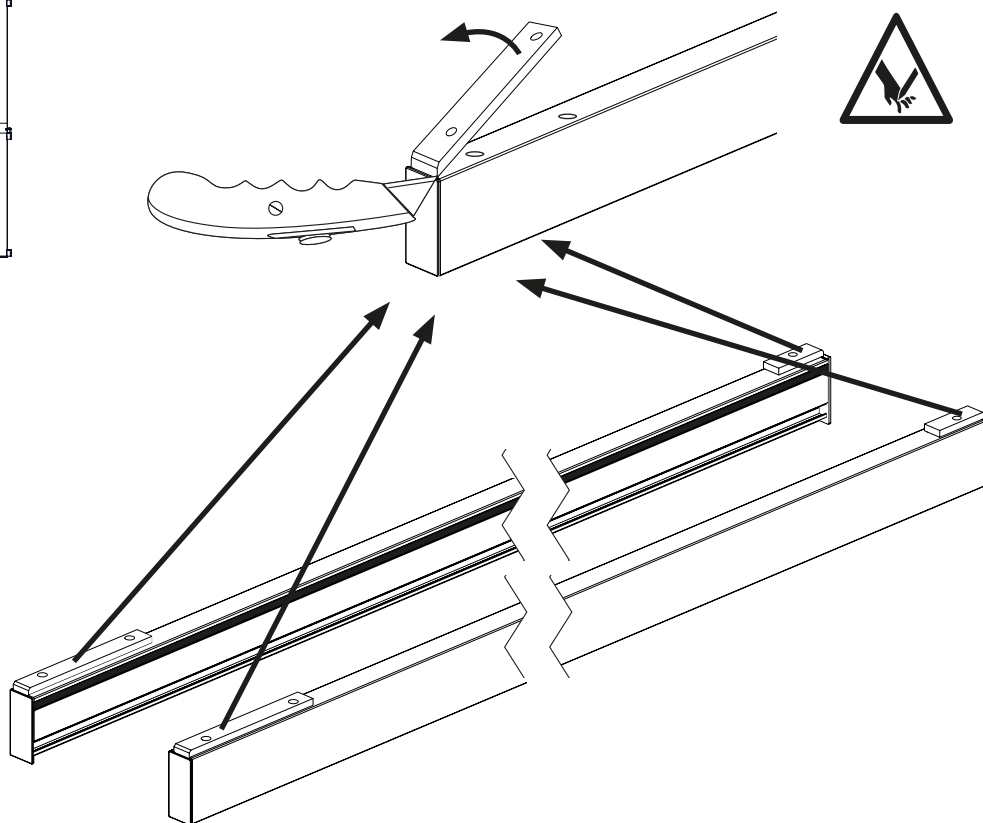
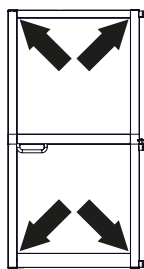
4x



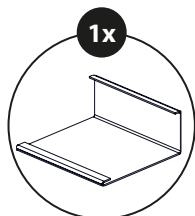
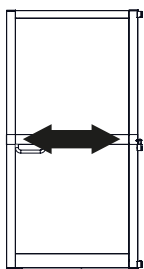
F1 W-0001



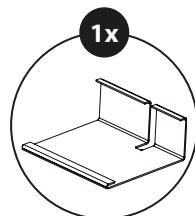
17 4x



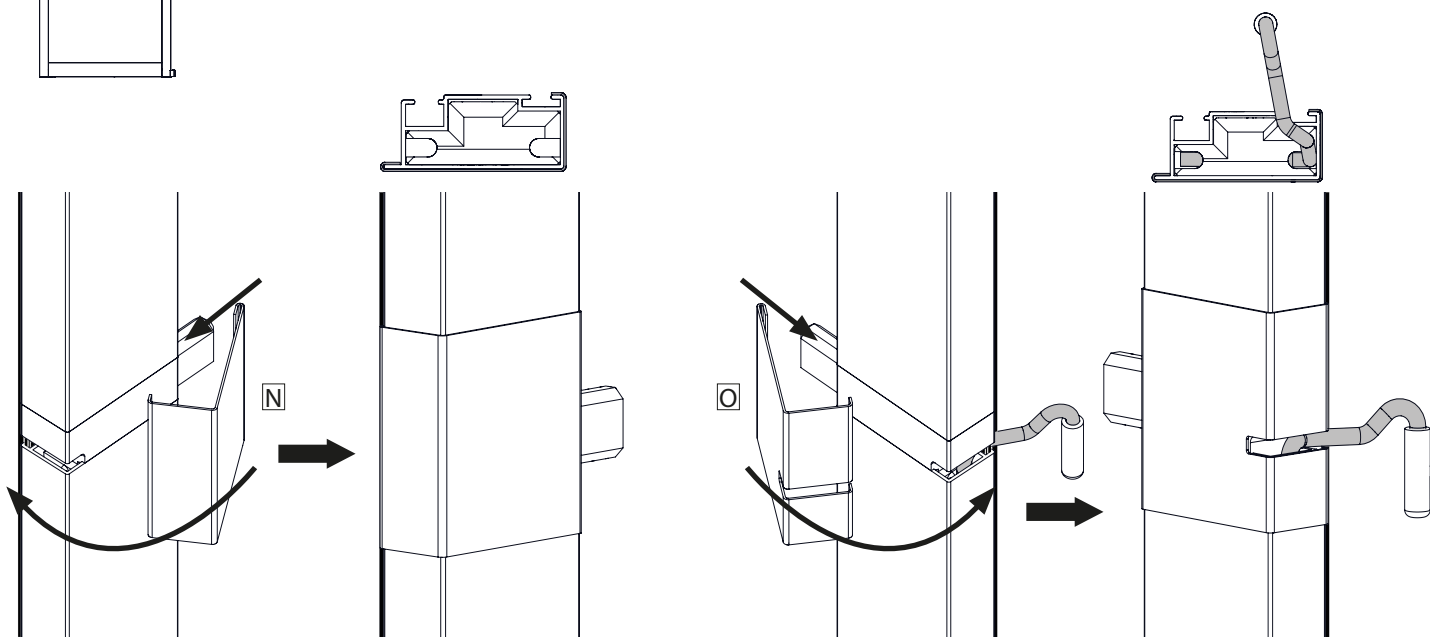
18



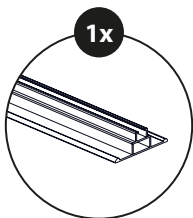
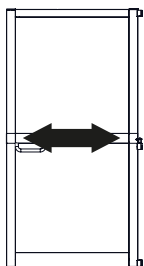
N 00787-0016



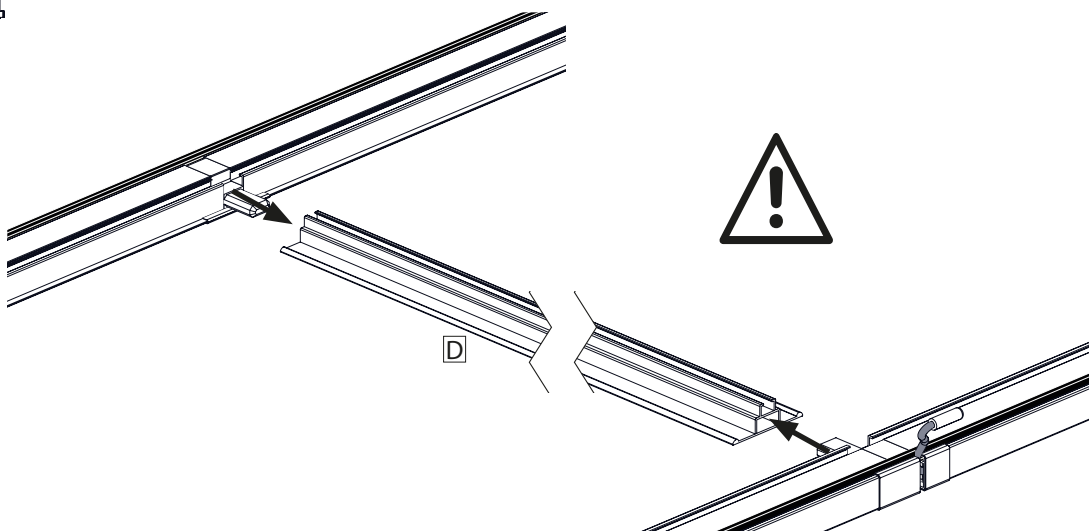
O 00787-0012



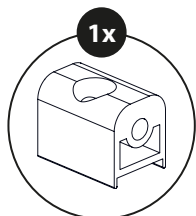
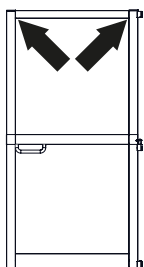
19



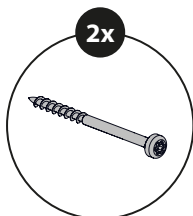
D 00787-0003



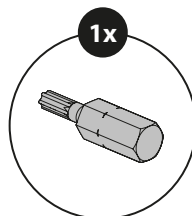
20



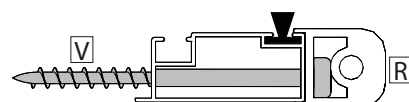
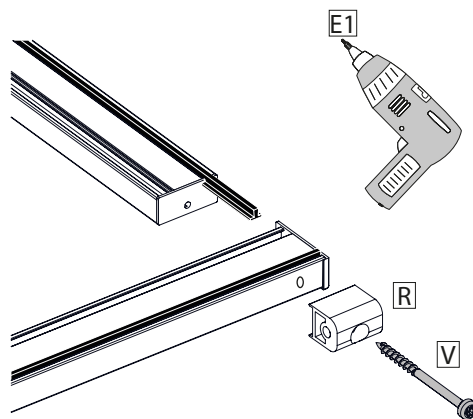
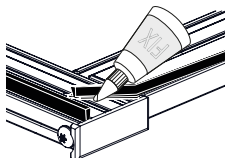
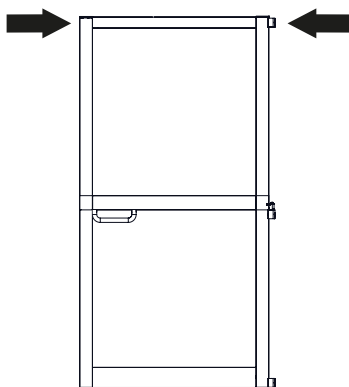
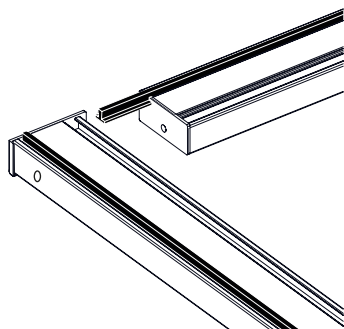
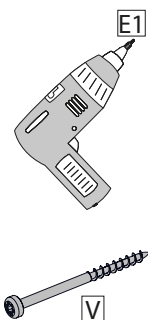
R 00787-0010



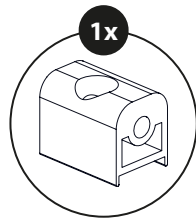
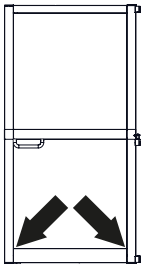
V 00787-0032



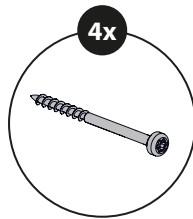
E1 W-0015



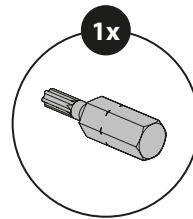
21



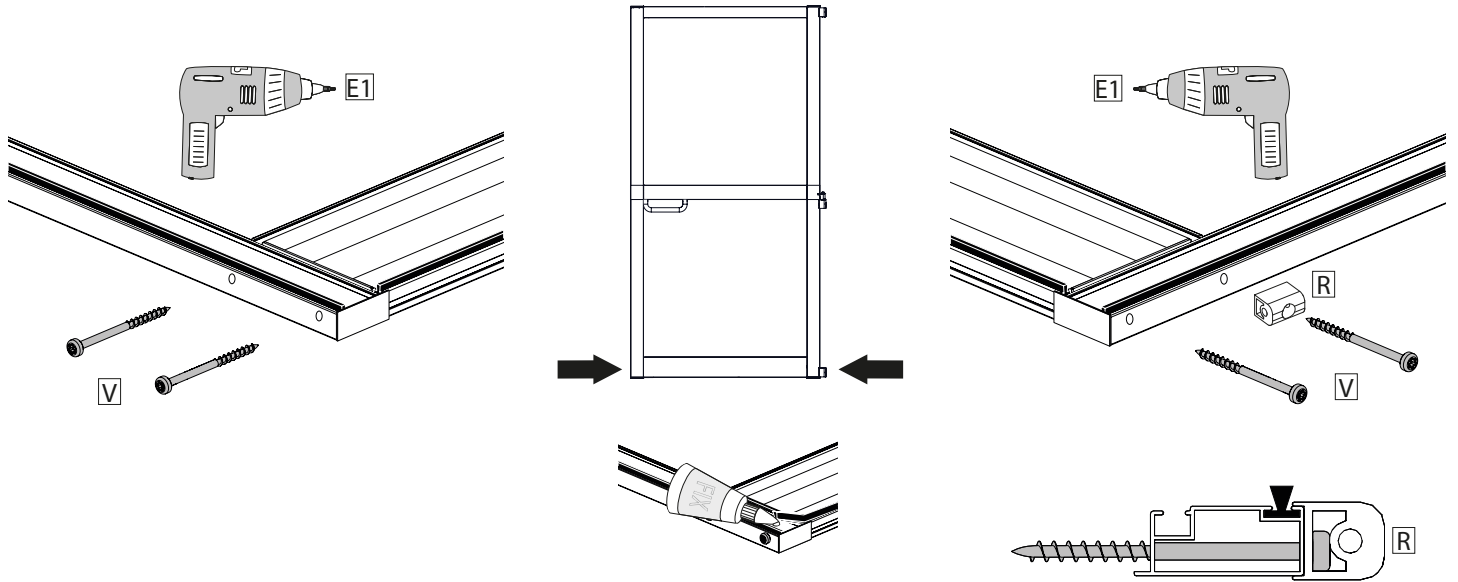
R 00787-0010



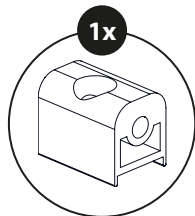
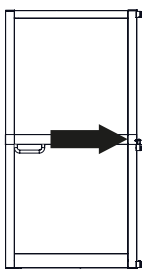
V 00787-0032



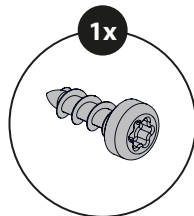
E1 W-0015



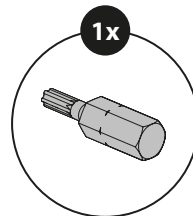
22



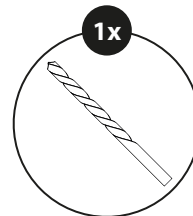
00787-0010



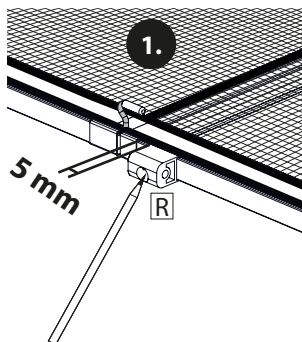
W 00787-0031



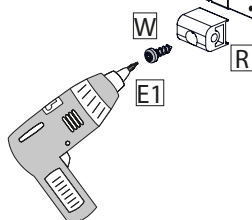
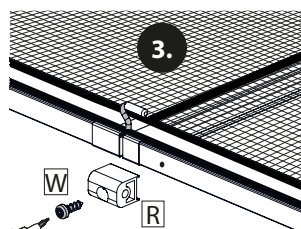
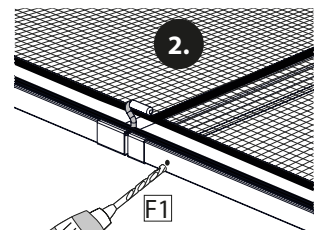
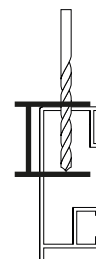
E1 W-0015



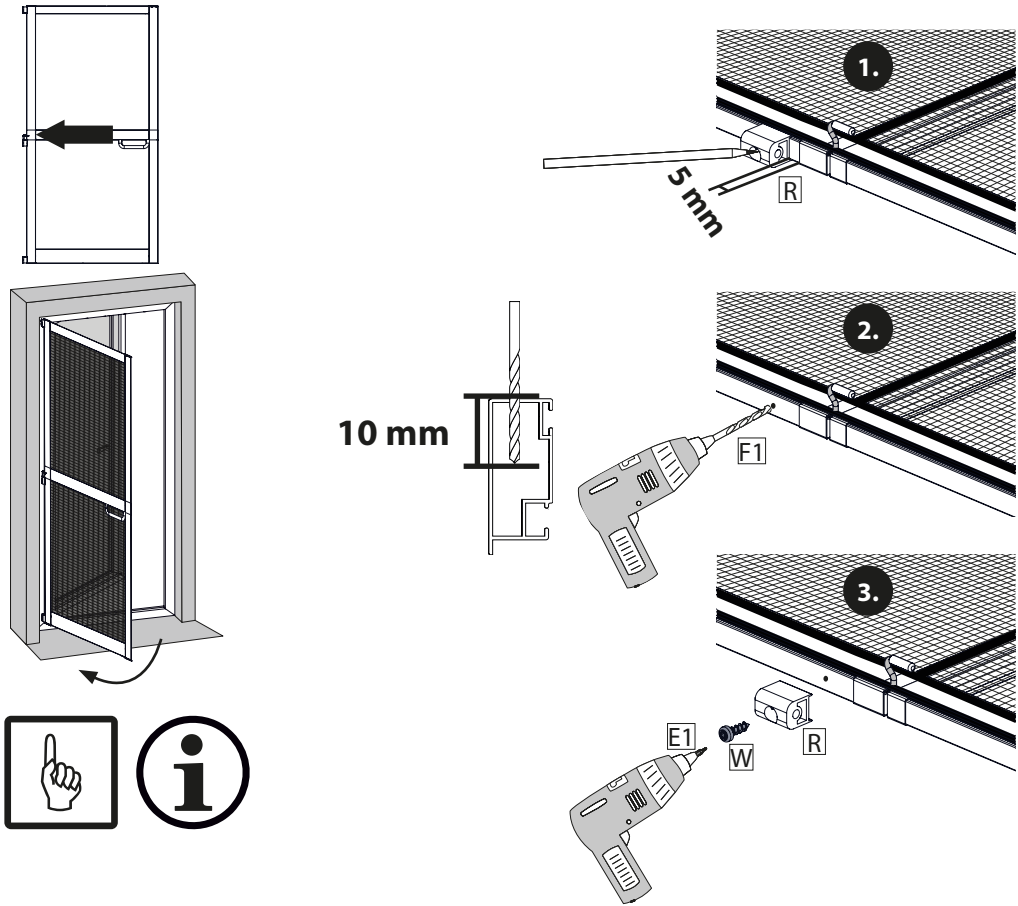
F1 W-0001



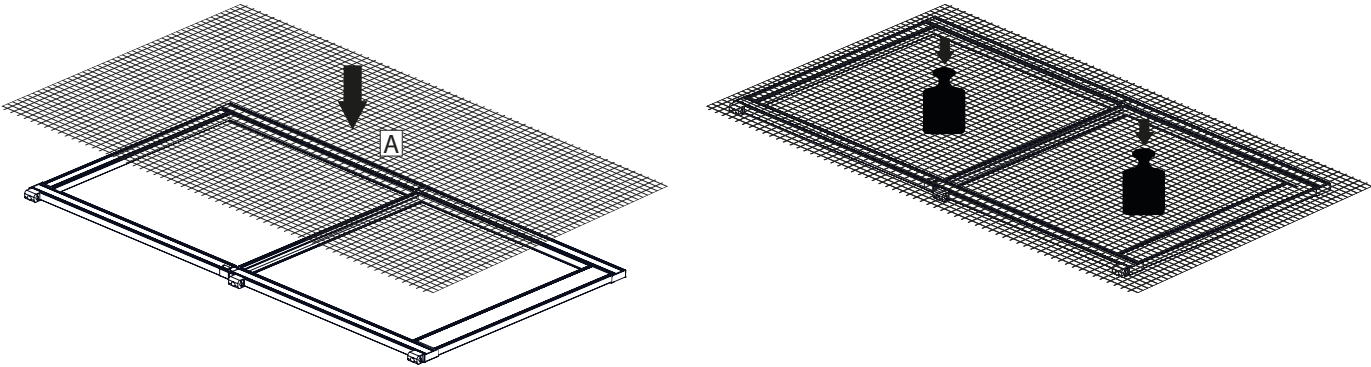
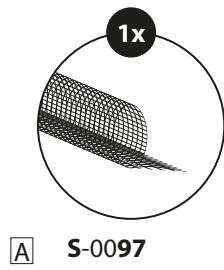
10 mm

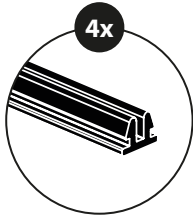


23

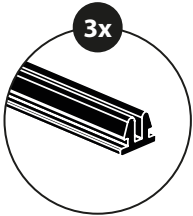


24

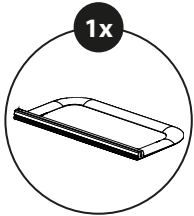




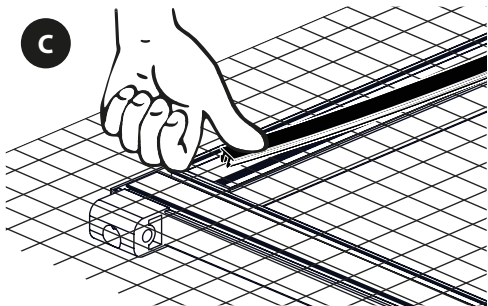
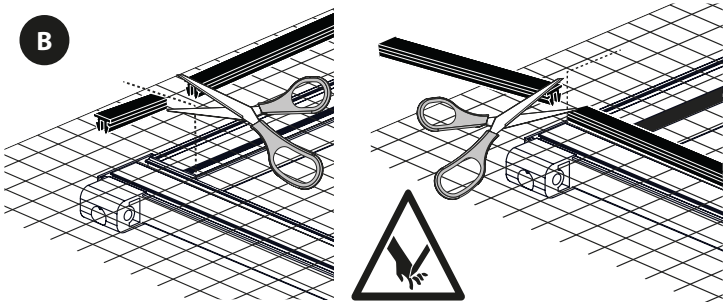
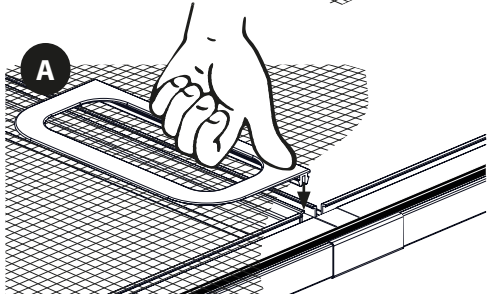
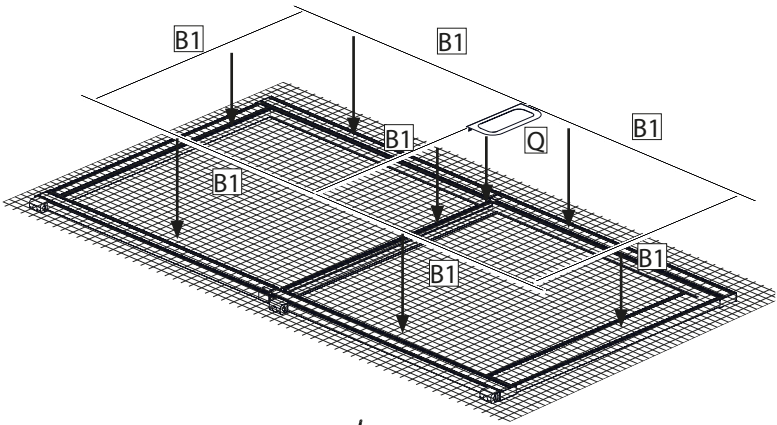
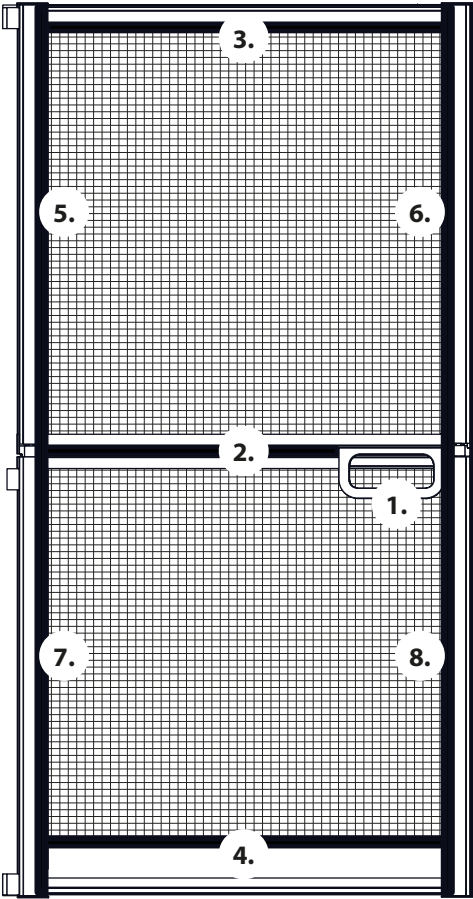
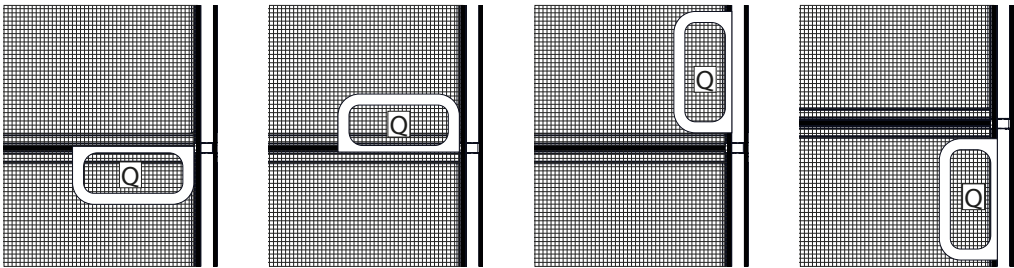
B1 S-0017 long



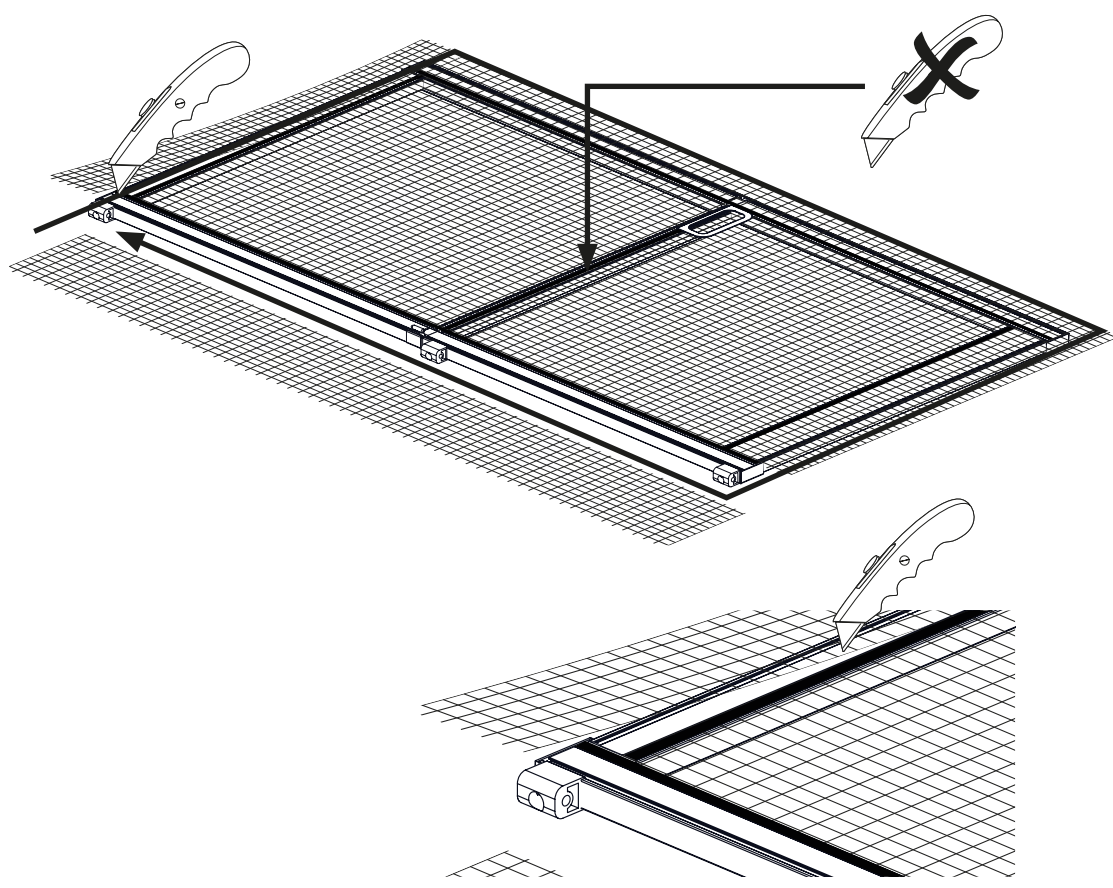
B1 S-0017 short



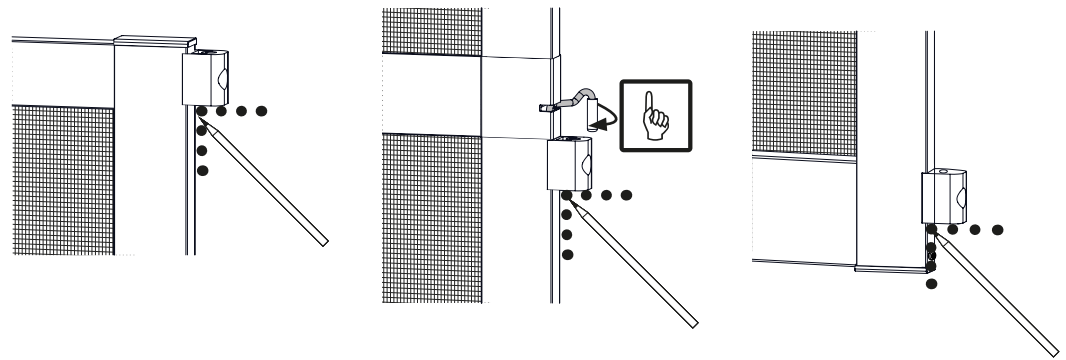
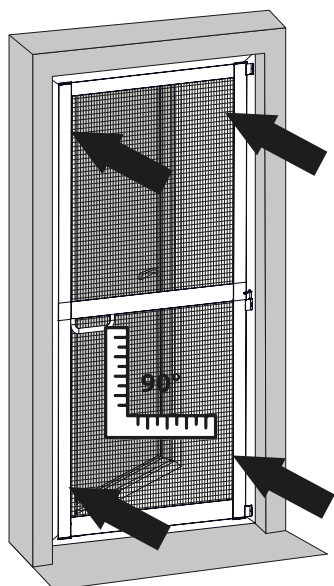
Q 00787-0009



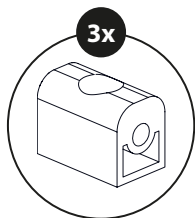
26



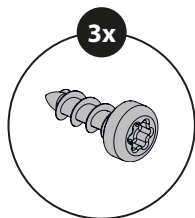
27



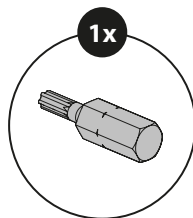
28



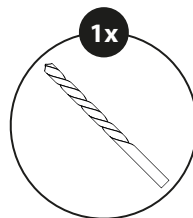
S 00787-0008



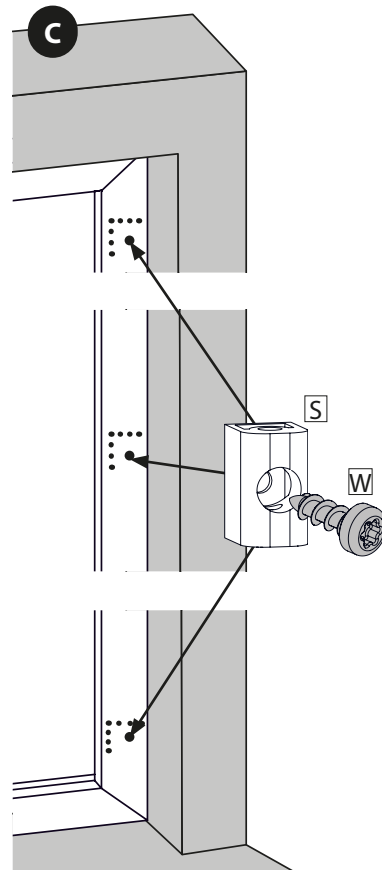
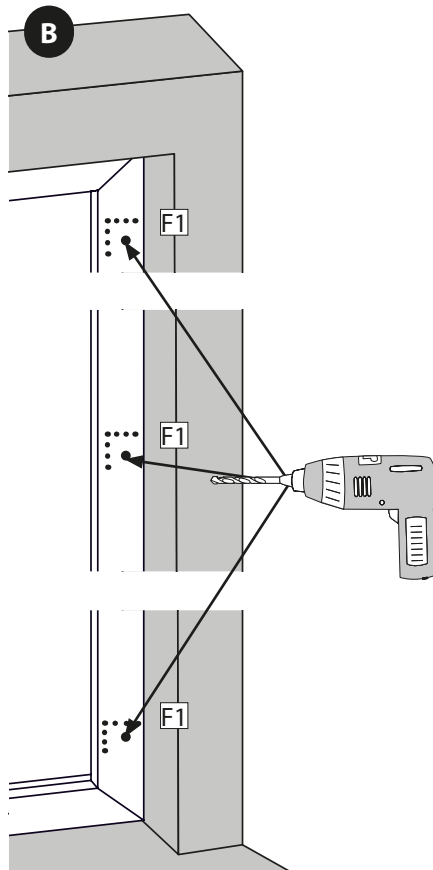
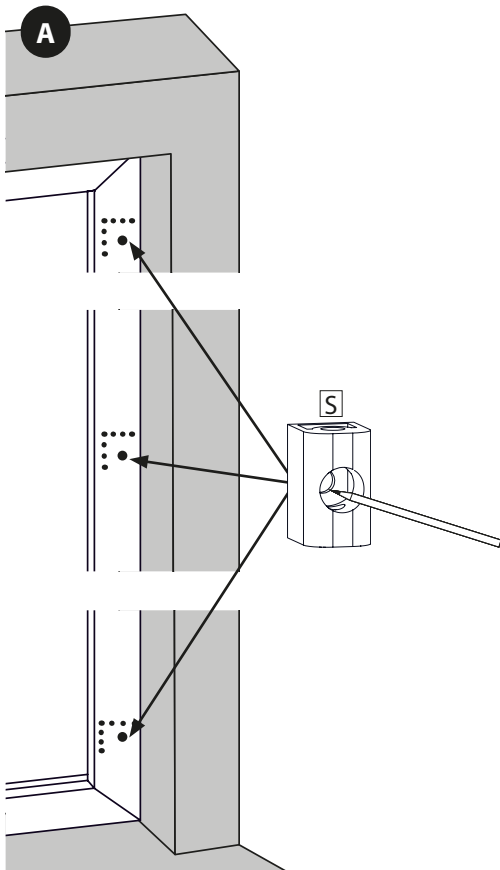
W 00787-0031



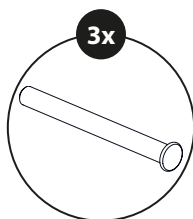
E1 W-0015



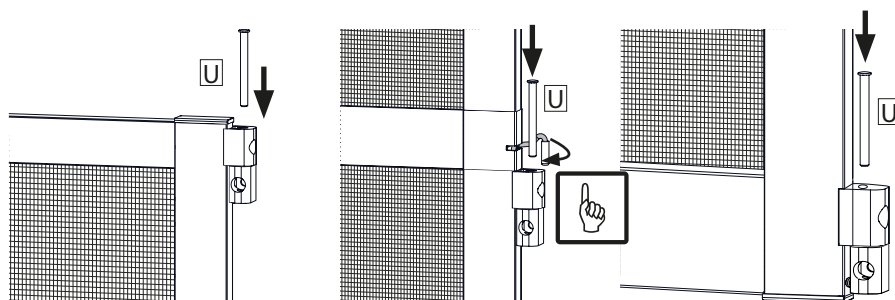
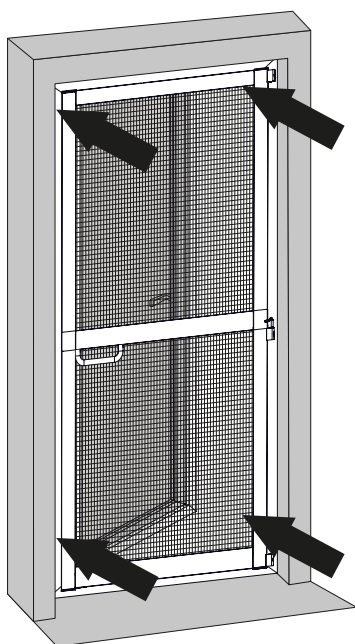
F1 W-0001



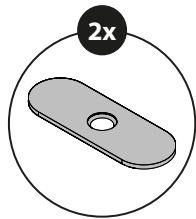
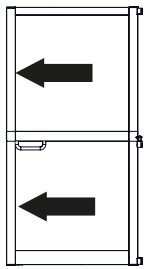
29



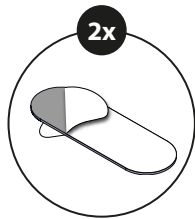
U 00787-0021



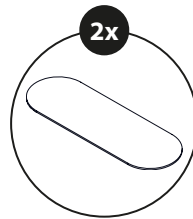
30 4x



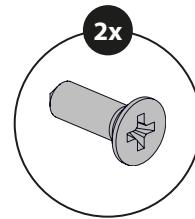
Y 00014-0027



Z 00014-0045



A1 00014-0044



X N-0177

